



2017 WASZP US NATIONAL CHAMPIONSHIP & 2017 CPYC MOTH OPEN

September 16-17 2017
Cedar Point Yacht Westport, CT



SAILING INSTRUCTIONS

Abbreviations

OA – Organizing Authority	RC – Race Committee
PC – Protest Committee	TC – Technical Committee
SI – Sailing Instructions	NOR – Notice of Race
RRS – Racing Rules of Sailing	ERS – Equipment Rules Of Sailing

The Organizing Authority (OA) is the Cedar Point Yacht Club (CPYC).
CPYC is located at 1 Bluff Point, Westport, CT, 06471. Phone number is (203) 226-7411.
Event information is available at www.yachtscoring.com. Club information is available at www.cedarpointyc.org

1 RULES

- 1.1 The regatta shall be governed by the rules as defined in the current version of the Racing Rules of Sailing.
- 1.2 The **Waszp Class Rules** shall apply for the WASZP Nationals. The **Moth Class Rules** shall apply for the Moth Open.
- 1.3 The following RRS rules will apply:
 - a. RRS 44.3 Scoring Penalty will apply.
 - b. Appendix V2, Penalty Taken after a Race, will apply.
- 1.4 Racing Rules of Sailing (RRS) listed below are changed as follows.
 - a. RRS 42.3(C) is amended to read:
 - i. When surfing (rapidly accelerating down a wave), foiling (sailing with the hull clear of the water due to the effect of hydrofoils) or planing is possible, the boat's crew may pump the sail in order to initiate surfing, foiling or planing, but only four times for each wave or gust of wind.
 - ii. Add to RRS 42.3: Rapid and /or repetitive body movements through contact with the hull or wings or similar actions that exert force upon the boat for the specific purpose of promoting foiling are allowed so long as the crew is positioned fully within the wing frame.
 - iii. Add to RRS 42.3: A boat's crew may pump the mainsail repeatedly to rotate the battens and camber inducers after gybing or tacking.
 - iv. The Equipment Rules of Sailing (ERS) Part I – Use of Equipment shall apply.
 - b. RRS 44.1 is changed: A boat may take a One-Turn Penalty when she may have broken one or more rules of Part 2 or rule 31 while racing.
 - c. RRS 61.1 (a) is changed by adding 61.1(d) Informing the Race Committee: A boat intending to protest about an incident that occurs in the racing area shall notify the Race Committee (RC) finish boat of her intention as soon as possible after finishing, without consultation with instructors, coaches or support persons, including (if possible) the boat identification number of the boat(s) being protested."
 - d. In the event of a conflict between the rules in the Notice of Race (NOR) and the Sailing Instructions (SI), the SI shall prevail. This changes RRS 63.7

2 NOTICES TO COMPETITORS

- 2.1 Notices will be posted on the official regatta notice board located on the south wall (facing the parking lot) of the Cedar Point Yacht Club clubhouse.

3 CHANGES TO SAILING INSTRUCTIONS

- 3.1 Any change to the sailing instructions will be posted no fewer than 30 minutes before the harbor start on the day the changes take effect.
- 3.2 Any change in the harbor start or first warning signal will be posted no later than the end of the protest time on the day before the change is to take effect.

4 SIGNALS MADE ASHORE

- 4.1 Signals made ashore will be displayed from the main flag pole.
- 4.2 When code flag “AP” is displayed ashore, removing it means either an abandonment signal will follow immediately, or a race signal will be made on the water no sooner than 45 minutes after removal. This changes race signal AP.



5 SCHEDULE OF RACES

5.1 The racing schedule is as follows: The schedule of events is as follows:

Day	Time	Activity
Saturday, Sept 16	0930	Competitors Meeting
	1000	Harbor Start
	1100	First Warning
Sunday, Sept 17	0900	Harbor Start
	1000	First Warning
	1500	No Warning After this Time

5.2 Ten races are scheduled. One race is required to be completed to constitute a series. The RC reserves the right to change the number of races to be sailed.

6 STARTING CLASS FLAGS

Class	Class Flag	
WAZSP	NP 1	
MOTH	NP 2	

7 RACING AREA

The racing area will be the waters of Long Island Sound off Cedar Point Yacht Club. Attachment A shows the racing area.

8 THE COURSE

- 8.1 The diagram in Attachment B show the courses, including the approximate angle between legs, the order in which marks are to be passed, and the side on which each mark is to be left.
- 8.2 No later than the warning signal, the race committee signal vessel will display the course to be sailed and the approximate compass bearing of the first leg.
- 8.3 When rounding the gate marks (Marks WP-WS and LP-LS), boats shall sail between the gate marks from the direction of the previous mark and round either gate mark, in the event that one of the gate marks is missing, boats shall leave the remaining mark to port.
- 8.4 A mark not on the leg of a course shall not be considered an obstruction.

9 MARKS

- 9.1 Rounding marks WP and WS will be orange inflatable tetrahedron marks.
- 9.2 Rounding mark W will be an orange inflatable tetrahedron mark.
- 9.3 Rounding marks LP and LS will be yellow inflatable tetrahedron marks.
- 9.4 The starting marks and finishing marks will be a large orange ball.

10 THE START

- 10.1 The starting line will be between a staff displaying an orange flag on the race committee signal vessel and the course side of the port-end starting mark (an orange ball).
- 10.2 Boats whose warning signal has not been made shall stay clear the starting area during the starting sequence for other Starting Classes.
- 10.3 The race committee will attempt to hail over a loud hailer, the sail numbers of OCS boats after the starting signal. The failure of any boat to hear the hail and the order and timing of such hails, shall not be considered an improper action or omission of the race committee under RRS 62.1 (a).
- 10.4 A boat may not start more than 4 minutes after the starting signal.

11 CHANGE OF THE NEXT LEG OF THE COURSE

- 11.1 There will be no changes of course.

12 THE FINISH

- 12.1 The finishing line will be between a staff displaying an orange flag on the race committee vessel and the course side of port-end finishing mark.
- 12.2 If the race committee intends not to start any more races on either day, it will display code flag A as boats are finishing.

13 PENALTY SYSTEM

- 13.1 For all classes, RRS 44.1 is changed so that the Two-Turns Penalty is replaced by the One-Turn Penalty.
- 13.2 For all classes, RRS 44.3 Scoring Penalty will apply.
- 13.3 A lesser penalty than DSQ (which may include no penalty) may be given at the discretion of the protest committee for a breach of a rule other than the rules of Part 2.

14 TIME LIMITS

- 14.1 The time limit for the first boat in each class to sail the course and finish shall be 45 minutes.
- 14.2 Boats failing to finish within 10 minutes after the first boat in their class sails the course and finishes, shall be scored Did Not Finish (DNF) without a hearing. (This changes rules 35, 63.1, A4 and A5).

15 PROTESTS AND REQUESTS FOR REDRESS

- 15.1 Protest forms are available at the race office located on the first floor of the Cedar Point clubhouse. Protests and requests for redress or reopening shall be delivered to the PC Secretary.
- 15.2 For each class, the protest time limit is 60 minutes after the race committee signal vessel docks, which will be posted promptly on the notice board.
- 15.3 The first sentence of Rule 62.2 is changed as follows: "The request shall be in writing and be delivered to the race office no later than the protest time limit or two hours after the incident, whichever is later, with the following exception : if the race committee posts a list of boats scored OCS, ZFP or BFD on the official notice board before the protest time limit, a request for redress based on such a posted score shall be made no later than one hour after the protest time limit."
- 15.4 Notices will be posted as soon as possible after the protest time limit to inform competitors of hearings in which they are parties or named as witnesses. Hearings will be held in the protest room, located on the first floor of the Cedar Point clubhouse as soon as practicable.
- 15.5 Notices of protests by the race committee or protest committee will be posted before the protest time limit to inform boats under RRS 61.1 (b).

16 SCORING

- 16.1 The Low Point Scoring System, RRS Appendix A, will apply.
- 16.2 One race is required to be completed to constitute a series.
- 16.3 When more than five (5) races have been completed, one (1) worst score will be excluded, as permitted in RRS 90.3(b), from a boat's series score. This changes Rule A2 and 90.3 (b).

17 SAFETY REGULATIONS

- 17.1 Each competitor shall wear a US Coast Guard approved Type I, II, or III personal flotation device (PFD) at all times while afloat, except during brief times when a sailor is adding or removing clothing
- 17.2 Helmets, while not required, are encouraged.
- 17.3 Boats not leaving the shore for the day's races shall notify the race office or race committee as soon as possible.
- 17.4 A boat that retires from a race shall notify a race committee vessel before leaving the race area. If this is not possible, the competitor shall notify a regatta representative immediately after arriving ashore.

18 REPLACEMENT OF CREW OR EQUIPMENT

- 18.1 Replacement of helmsperson or equipment shall require written approval of the Principal Race Officer (PRO).
- 18.2 The written request for replacement of helmsperson or equipment shall be made to the PRO at the first reasonable opportunity, but no later than the protest time limit for that day.

19 EQUIPMENT AND MEASUREMENT CHECKS

- 19.1 All boats may be inspected for class rules compliance prior to racing.
- 19.2 In addition, any boat or equipment may be checked for compliance with the class rules and sailing instructions at any time.
- 19.3 Limitations of equipment
 - a. Only one set of sails shall be used during the regatta.
 - b. Foils may only be changed in the water in the CPYC marina
- 19.4 All boats, when not afloat, shall be placed in the official dinghy park.

20 SUPPORT BOATS

- 20.1 Coaches and other support personnel shall not be in the area where boats are racing or within 50 feet of any boat racing from the time of the preparatory signal until all boats have finished or the race committee signals a postponement, general recall or abandonment. This SI does not apply during rescue operations.
- 20.2 All support boats are at all times submitting to the Organizing Committee and Race Committee authority, are legally considered as assistance / rescue boats and must comply with any instructions given by these authorities or by the police.

21 TRASH DISPOSAL

As sailors, we seek to protect and restore our oceans and coastal waters. Boats shall not intentionally put trash in the water. Trash may be placed aboard support and race committee boats. The penalty for breaking RRS 55 is at the discretion of the Jury and may be less than disqualification.

22 RADIO COMMUNICATION

A boat shall neither make radio transmissions while racing nor receive radio communications not available to all boats. This restriction also applies to mobile telephones.

23 PRIZES

Prizes will be presented to skippers placing first, second and third in each class of the regatta.

24 DISCLAIMER OF LIABILITY

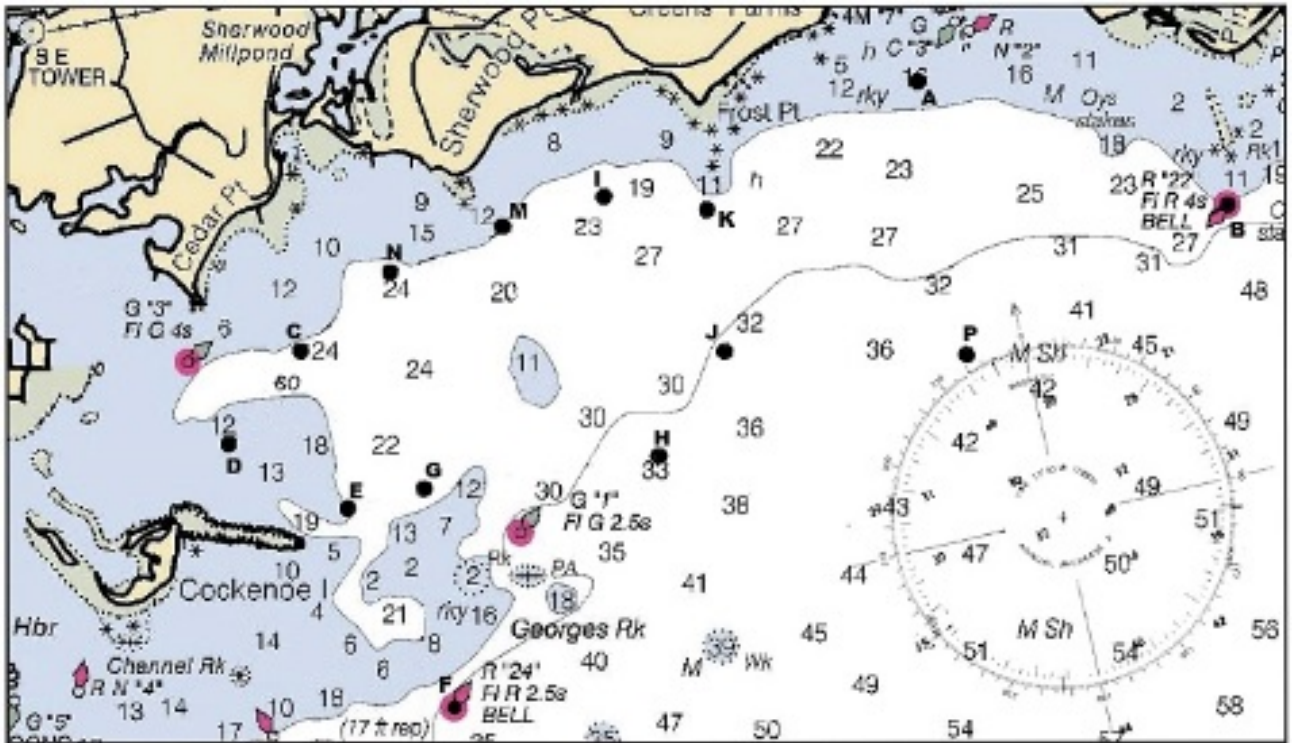
Sailing is an activity that has an inherent risk of damage and injury. Competitors in this event are participating entirely at their own risk. See RRS 4, Decision to Race. The race organizers, Cedar Point Yacht Club, the Protest Committee, volunteers, agents and employees or any other organization or official providing services at the request of any of the foregoing in connection with the event will not be responsible for damage to any boat or other property or the injury to any person sustained as a result of participation in this event. By participating in the event, each competitor agrees to release the race organizers and all persons and groups listed above from any and all liability associated with such competitor's participation in this event to the fullest extent permitted by law.

25 ADDITIONAL INFORMATION

Regatta Chair	Sam Blouin	SamuelBBlouin@gmail.com
Principal Race Officer	Sharon Bernd	SharonBSail@aol.com
Chief Judge	Britt Hall	Britthall45@aol.com
Technical Committee	Reed Baldrige	Conner Blouin
Yacht Club Manager	Trey Lange	clubmanager@cedarpointyc.org
Yacht Club Race Director	Samantha Paris	racedirector@cedarpointyc.org

ATTACHMENT A – RACING AREA

RACE AREA



ATTACHMENT B – COURSES

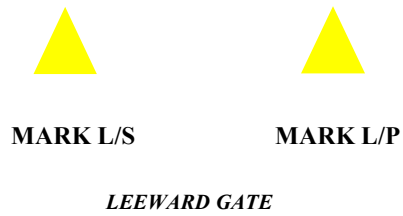
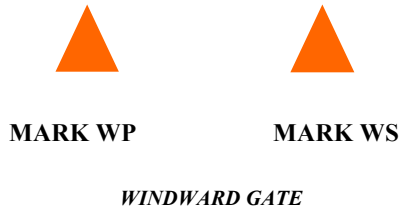


DIAGRAM NOT TO SCALE

MARKS

- Mark WP, Mark WS, Mark LS and Mark LP are rounding marks.
- Marks WP and WS collectively, are a gate. Boats shall sail between the gate marks from the direction of the previous mark and round either gate mark. In the event that one of the gate marks is missing, boats shall leave the remaining mark to port
- Marks L/S and L/P collectively, are a gate. Boats shall sail between the gate marks from the direction of the previous mark and round either gate mark. In the event that one of the gate marks is missing, boats shall leave the remaining mark to port.

COURSES W1 and W2:

W1	Start	WP / WS GATE	FINISH		
W2	Start	WP / WS GATE	LP / LS GATE	WP / WS GATE	FINISH

ATTACHMENT B – COURSES

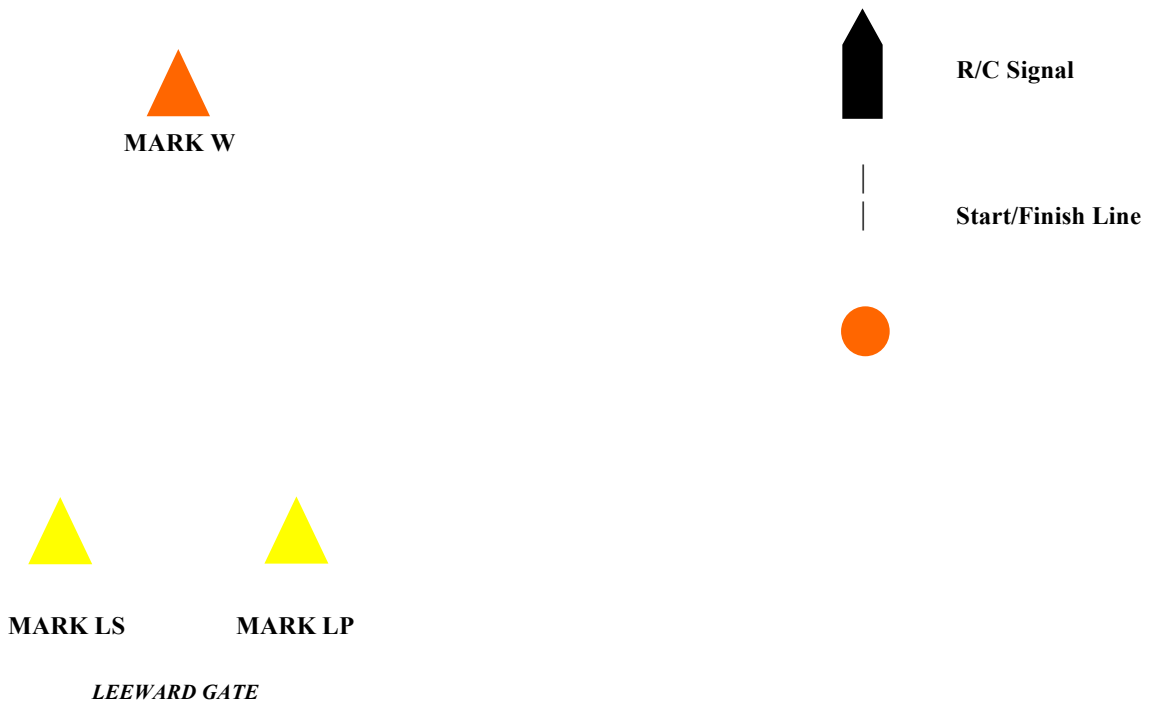


DIAGRAM NOT TO SCALE

MARKS

- Mark W, Mark LS and Mark LP are rounding marks.
- Marks W-port in the course description indicates rounding Mark W to Port
- Marks W-starboard in the course description indicates rounding Mark W to Starboard
- Marks L/S and L/P collectively, are a gate. Boats shall sail between the gate marks from the direction of the previous mark and round either gate mark. In the event that one of the gate marks is missing, boats shall leave the remaining mark to port.

COURSES 1 and 2:

R1	Start	W- Port	LP / LS GATE	W-Starboard	FINISH		
R2	Start	W- Port	LP / LS GATE	W-Port	LP / LS GATE	W-Starboard	FINISH